

Atherfold Road, Clapham, SW9

1 bedroom flat - conversion for sale

£485,000

Leasehold

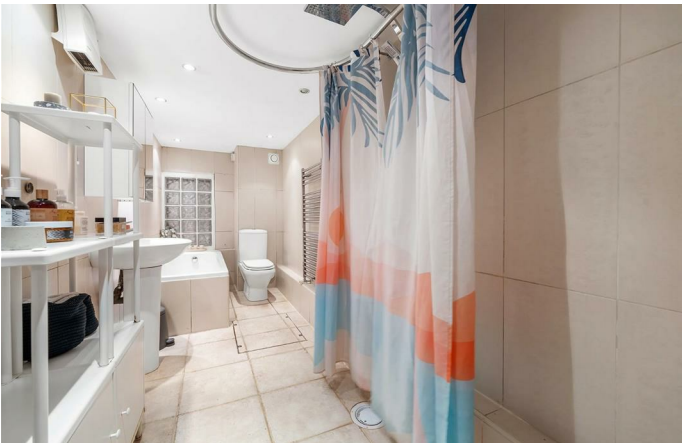
Property Details

A charming one double bedroom garden flat with a walk-in wardrobe, occupying the ground floor of an attractive Victorian conversion. The elegant reception room features a bay window, high ceilings with ornate coricing, and a characterful wood-burning stove, creating a warm and inviting space. A separate kitchen offers sleek cabinetry, marbled worktops, checkerboard flooring and French doors opening onto the private rear garden. The low-maintenance garden provides a raised sun-trap deck, artificial lawn, outdoor storage and evening lighting, perfect for entertaining or relaxing. The rear-facing double bedroom enjoys a tranquil outlook, dual-aspect windows and flexible additional dressing space that could be adapted as a study or nursery area. A spacious bathroom includes a double-ended bathtub and separate shower. The property also benefits from potential to extend, subject to permissions, offering the exciting possibility of creating a two-bedroom home in the future.

Features

- Spacious double bedroom plus walk-in wardrobe
- Private walled garden
- Characterful Victorian conversion
- Wood-burning stove
- Potential to extend STNP
- Desirable residential street
- Clapham High Street just a four-minute walk
- Brixton a twelve-minute stroll
- Northern and Victoria Lines
- Right to manage

Council tax band B EPC rating D (67)



Atherfold Road, Clapham, SW9

Atherfold Road, SW9
1 Bedroom Flat

APPROXIMATE GROSS INTERNAL AREA: 589 SQ FT / 54.7 SQ M



While we try our very best, floor plans are produced as a guide only and we take no responsibility for the precise accuracy with which any property is represented.

Atherfold Road, Clapham, SW9

